

# Yamaha Performance Bulletin

YPB#: PB\_SLF\_2360CC\_F300UCA\_2010-06-25\_OCC

Test Date: 6/25/10



**Note:** Boat shown with optional out-board power.



## Sailfish® 2360 CC®

Length	23' 6"
Beam	9'
Dry Weight (Boat Mfr. Published)	3,400 lbs.
Maximum HP	400 hp
Fuel Capacity	153 gals.
Weight as Tested (Approximate)	5,005 lbs.

## SAILFISH BOATS

Boat Manufactured By:  
Sailfish Boats • PO Box 1899 • Cairo, GA 31728  
229-377-2125 • www.sailfishboats.com

## Yamaha F300UCA

Horsepower	300
Displacement	4.2 L
Weight (Catalog Published)	571 lbs.
Gear Ratio	1.75

## Engine Mounting Height

Mounting Hole Position	#2
------------------------	----

## Propeller

Series	Saltwater Series II
Diameter/Pitch	15-1/2 x 17
Yamaha Part #	6D0-45978-00-00
Propeller Material	Polished Stainless Steel

## Test Conditions

Number of People	2
Air / Water Temperature (Fahrenheit)	94° / 92°
Elevation	194'
Wind Velocity	5-10 MPH

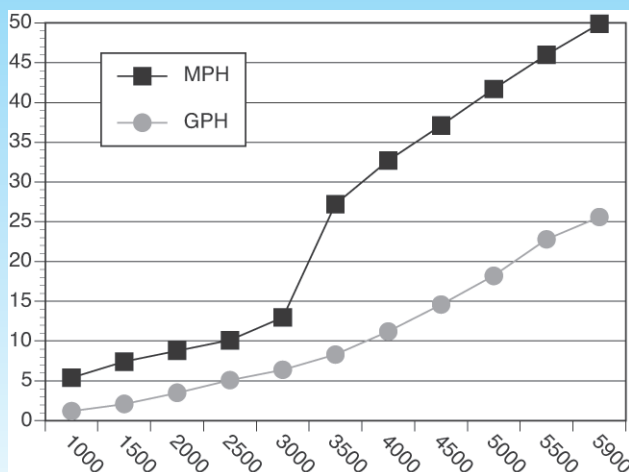
**Comments:** Test weight includes 70 gallons of fuel, 2 batteries, T-top, safety and test equipment. Fuel consumption data gathered with Yamaha Command Link® fuel management system. Zero-to-30 speed data gathered with radar gun. Other speed data gathered with GPS receiver.

**Notice to Consumer:** The information and data contained in this Performance Bulletin is approximate and subject to many different factors and variables. It is provided as a guideline only and should not be relied upon as representative of actual performance. Your boat's performance may be different than the information contained in this Performance Bulletin due to various factors, including your boat's actual weight, wind and water conditions, temperature, humidity, elevation, bottom paint, boat options affecting wind/water drag and/or boat weight, and operator ability. Please confirm the specifications and performance data on your specific boat/engine combination with your dealer prior to purchase. Please also keep in mind that the data contained in this Performance Bulletin may or may not have been performed using Yamaha PowerMatched components. Yamaha reserves the right to change the specifications and performance data of this Performance Bulletin or engine without notice. This document contains many of Yamaha's valuable trademarks. It may also contain trademarks belonging to other companies. Any references to other companies of their products are for identification purposes only, and are not intended to be an endorsement.

## Performance Data

RPM	MPH	GPH	MPG
1000	5.4	1.2	4.50
1500	7.4	2.1	3.52
2000	8.8	3.5	2.51
2500	10.1	5.1	1.98
3000	13.0	6.4	2.03
<b>3500</b>	<b>27.2</b>	<b>8.3</b>	<b>3.28</b>
4000	32.7	11.2	2.92
4500	37.1	14.6	2.54
5000	41.7	18.2	2.29
5500	46.0	22.8	2.02
<b>5900</b>	<b>49.9</b>	<b>25.6</b>	<b>1.95</b>

Seconds to Plane **3.36**  
Seconds 0-30 MPH **6.57**



Test performed and verified by Yamaha Application Engineers.

### For More Information:

Yamaha Motor Corporation, U.S.A. • OEM Division, Marine Group  
1270 Chastain Road NW • Kennesaw, GA 30144 • (800) 88-YAMAHA  
For other Performance Bulletins, visit [www.yamaha-motor.com](http://www.yamaha-motor.com).

© 2009 Yamaha Motor Corporation, U.S.A. All rights reserved.